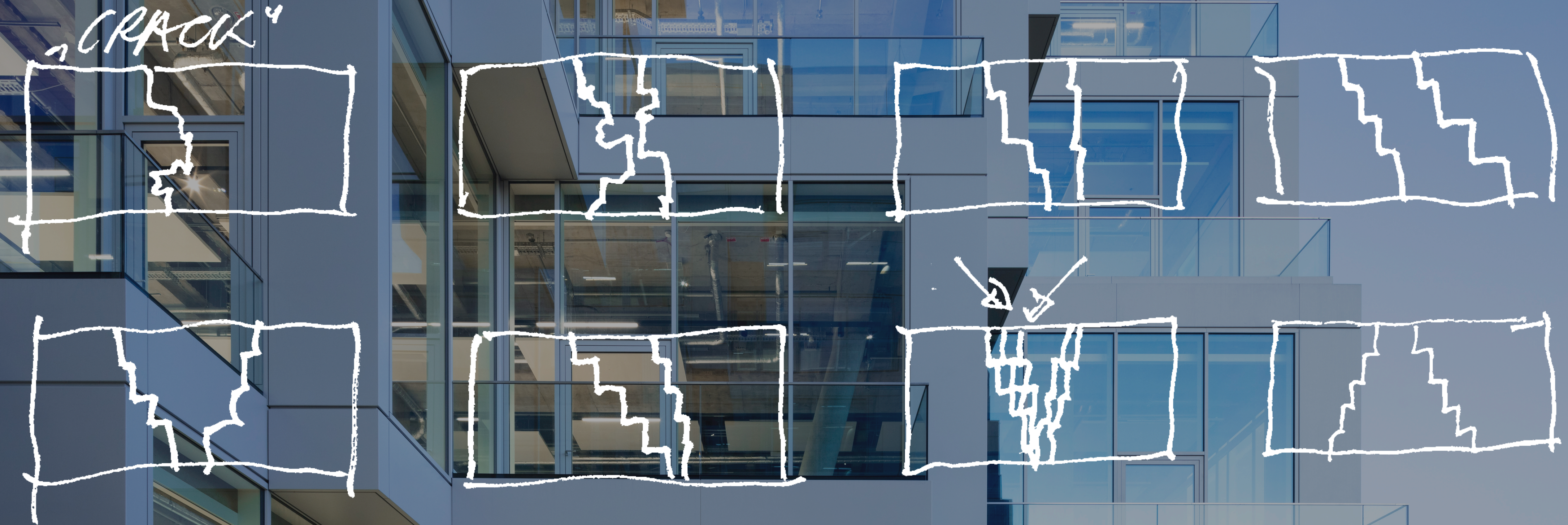


TURBO-CHARGING DESIGN

AI AS TOOL FOR FASTER THINKING



MARTIN JASPER
JASPER ARCHITECTS ●

HAMBURG, 22.04.2026
CONSTRUCTION SUMMIT 2026



- OFFICES
- REPRESENTATIONS



ENAÍ AMAZONAS RESORT
TAMBOPATA, PERÚ



HSH HOSTEL AND OFFICES
MODULAR WOOD CONSTRUCTION
BERLIN, GERMANY



NESTLÉ FUTURE WORK HEADQUARTER
QUITO, ECUADOR



CITY GOVERNMENT HALL - CLT WOOD CONSTRUCTION
PORT AU PRINCE, HAITI

**OUR TAKE ON SUSTAINABILITY:
TRANSFORMING CITIES,
CONSERVING ♻️ RESOURCES:**

We prioritize sustainability ♻️ by employing eco-friendly building materials, energy-efficient designs, and renewable energy sources. 🌱 Our projects harness nature's resources to create spaces that are not only beautiful but also environmentally responsible, contributing to a greener planet. 🌍



DUNAS DESERT RESORT
KUWAIT



NEW URBANITY:
We design for the future, ↗ creating urban environments that promote **community, connectivity, and walkability.**
✂ Our innovative urban solutions emphasize **mixed-use developments, green spaces, and smart infrastructure,** fostering **vibrant, inclusive neighborhoods.**



UP! BERLIN - DEPARTMENSTORE
ADAPTIVE RE-USE



UP! BERLIN - DEPARTMENSTORE
ADAPTIVE RE-USE






NOVOGRODZKA WARSAW
HERITAGE BUILDING COMPLEX RE-USE



M25 BERLIN - DEPARTMENSTORE
ADAPTIVE RE-USE



ADAPTIVE RE-USE:
Our commitment to adaptive re-use  breathes new life into existing structures, preserving their historical and cultural significance  while reducing waste and environmental impact. Witness the transformation of forgotten spaces into vibrant, functional environments that harmonize with the past. 

PALMANOVA LAS LOMAS



RENEW RUHRTURM ESSEN





AI: FASTER THINKING, **NOT** BETTER ANSWERS





"I want AI to do my laundry and dishes so that I can do art and writing, not for AI to do my art and writing so that I can do my laundry and dishes."

Author and videogame enthusiast
(although both)

Hi Team! In preparation of my lecture about AI integration in our working processes at the construction Summit on wednesday, I would like to hear from all of you, how you have been integrating AI in our/your working processes.
Could all please just drop some bullet points here? Simply in the style of: 10:37 ✓✓

- Translation
- Email Writing
- Rendering

10:37 ✓✓



bitte erstelle mir eine kurze liste, wozu ich deine dienste überwiegend benutze als bullet point. dazu kommt noch MoM's erstellen lassen (das mache eine andere AI)

Nachgedacht für eine Sekunde

- Formulieren und Überarbeiten von E-Mails
- Übersetzungen, vor allem Deutsch – Spanisch
- Schreiben in passendem Tonfall, je nach Empfänger und Kontext
- Kürzen, Glätten und professionelles Umformulieren von Texten
- Unterstützung bei Abstimmungen mit Kunden, Planern und Projektbeteiligten
- Erstellen von kurzen Listen, Zusammenfassungen und Textbausteinen
- MoM's erstellen lassen (über eine andere AI)



- ADMIN
- LEARNING
- RESEARCH
- PLANNING
- COMMUNICATION

• ADMIN

- AUTOMATISIERUNG VON E-MAILS, ÜBERSETZUNGEN UND TEXTBAUSTEINEN
- STRUKTURIERUNG VON PROJEKTINFORMATIONEN UND DOKUMENTATION
- ERSTELLUNG VON PROTOKOLLEN, LISTEN UND SPREAD SHEETS

• LEARNING

- SCHNELLES VERSTÄNDNIS VON NORMEN, TOOLS UND TECHNISCHEN THEMEN
- ON-DEMAND UNTERSTÜTZUNG BEI SOFTWARE UND WORKFLOWS
- KONTINUIERLICHES LERNEN IM PROJEKTKONTEXT

• RESEARCH

- SCHNELLE RECHERCHE VON REFERENZEN, TYPOLOGIEN UND KONTEXT
- VERGLEICH VON PROJEKTEN UND STRATEGISCHEN ANSÄTZEN
- AUFBAU VON PROJEKTSPEZIFISCHEM WISSEN IN ECHTZEIT

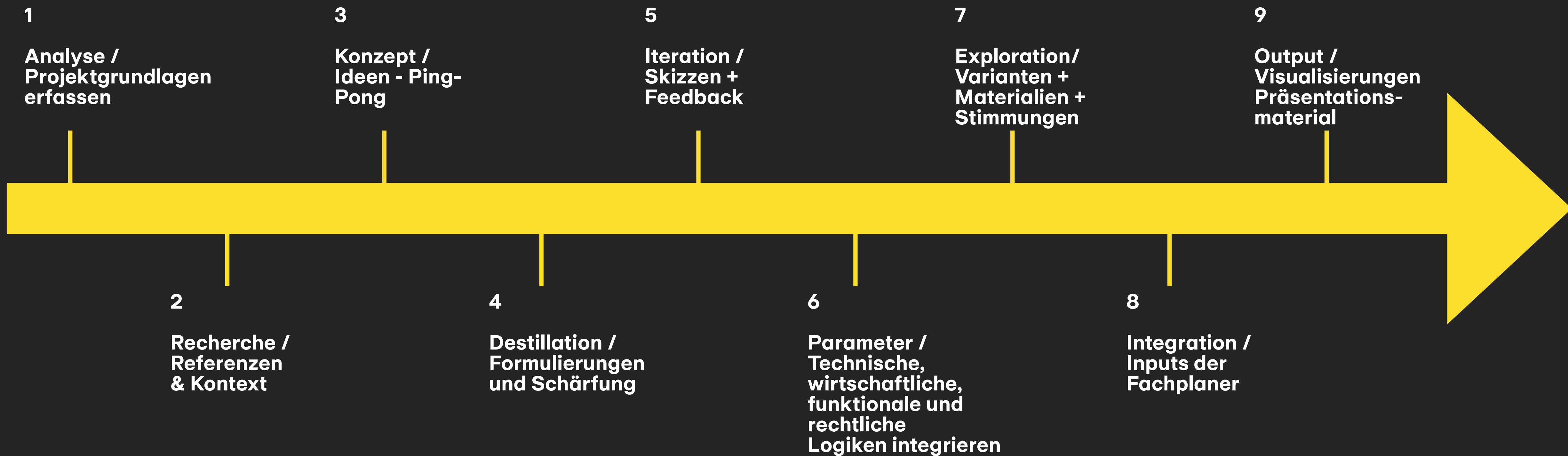
• COMMUNICATION

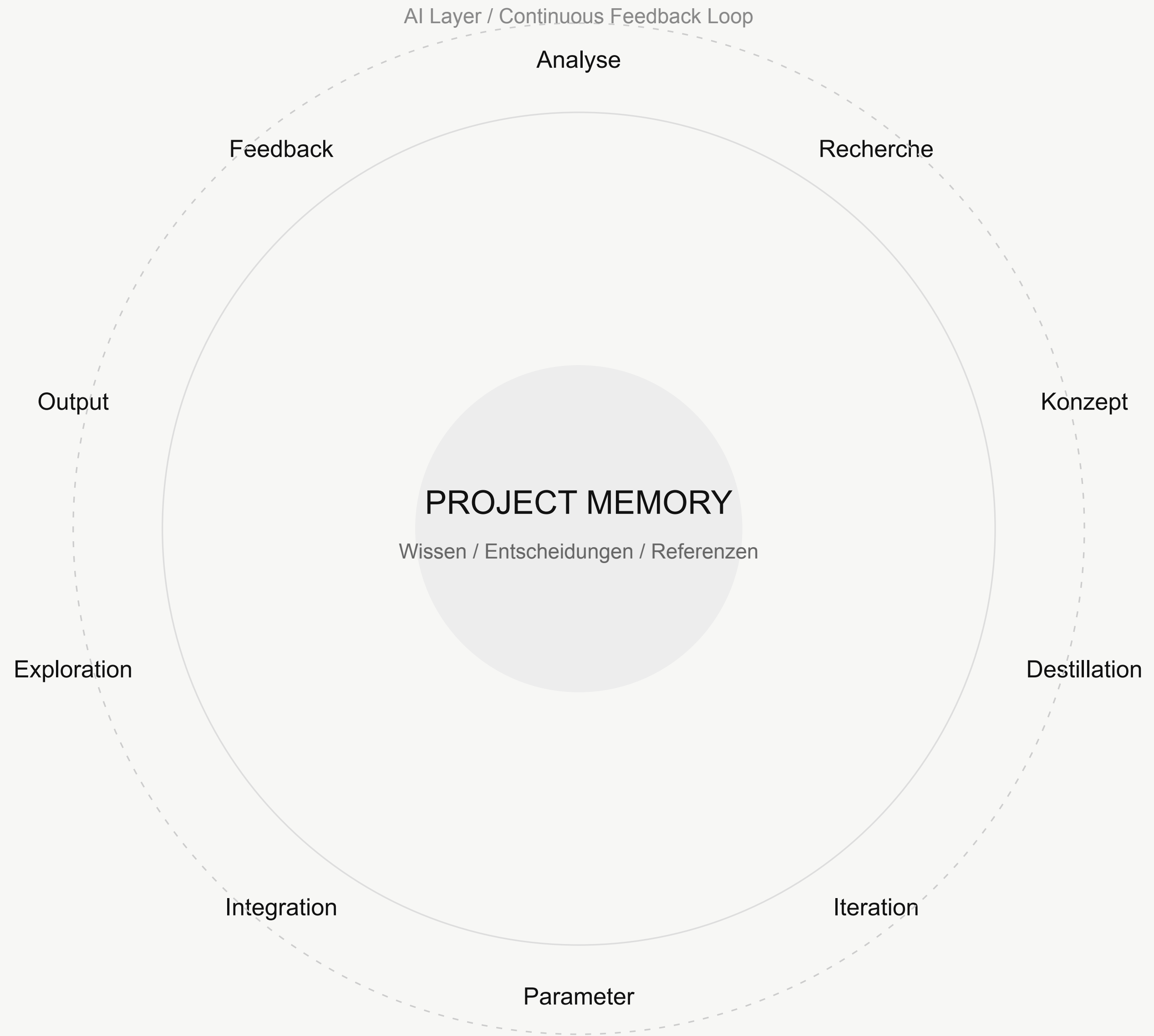
- SCHREIBEN UND SCHÄRFEN VON KONZEPTTEXTEN UND NARRATIVEN
- ANPASSUNG VON TONALITÄT JE NACH KONTEXT (CLIENT, WETTBEWERB, INTERN)
- UNTERSTÜTZUNG IN ABSTIMMUNG MIT FACHPLANERN UND STAKEHOLDERN
- VERFASSEN, ÜBERARBEITEN UND ÜBERSETZEN VON E-MAILS
- MEHRSPRACHIGE KOMMUNIKATION IM TEAM (DE / EN / ES)

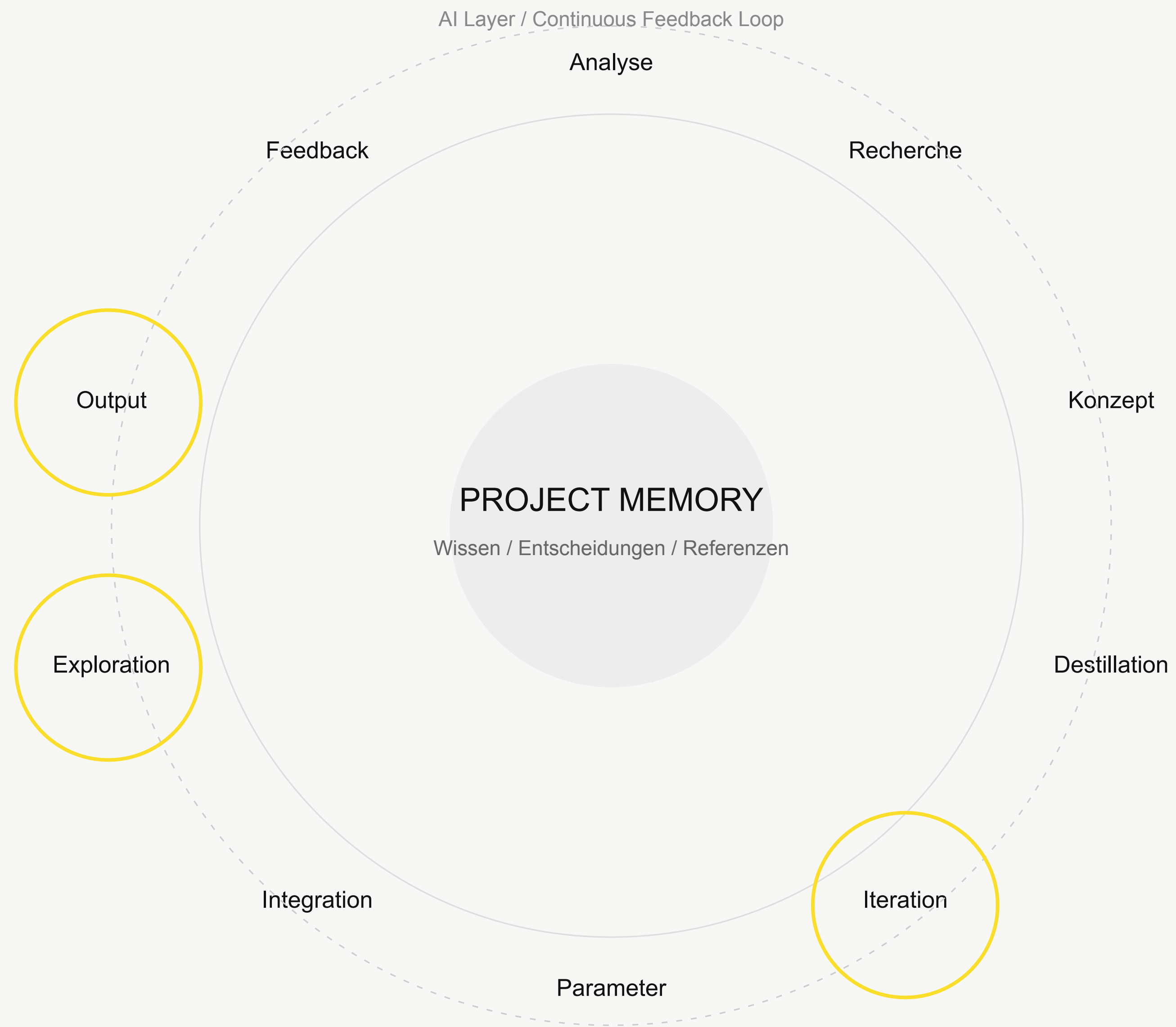
• PLANNING

- LAUFENDER ABGLEICH VON TECHNISCHEN UND WIRTSCHAFTLICHEN PARAMETERN
- UNTERSTÜTZUNG BEI DIMENSIONIERUNGEN UND MACHBARKEITEN
- STRUKTURIERUNG VON WORKFLOWS UND PROJEKTLOGIKEN

• PLANNING







PROMPTING: HEY CHAT, PLEASE WRITE ME A PROMPT TO...

this is a Pedestrian perspective. The Plynth is filled with gastronomy/
Cafe/Shop Public functions.

Please work on this image according to the following indications:

PHOTOREALISTIC ENHANCEMENT (ATMOSPHERE + VEGETATION)

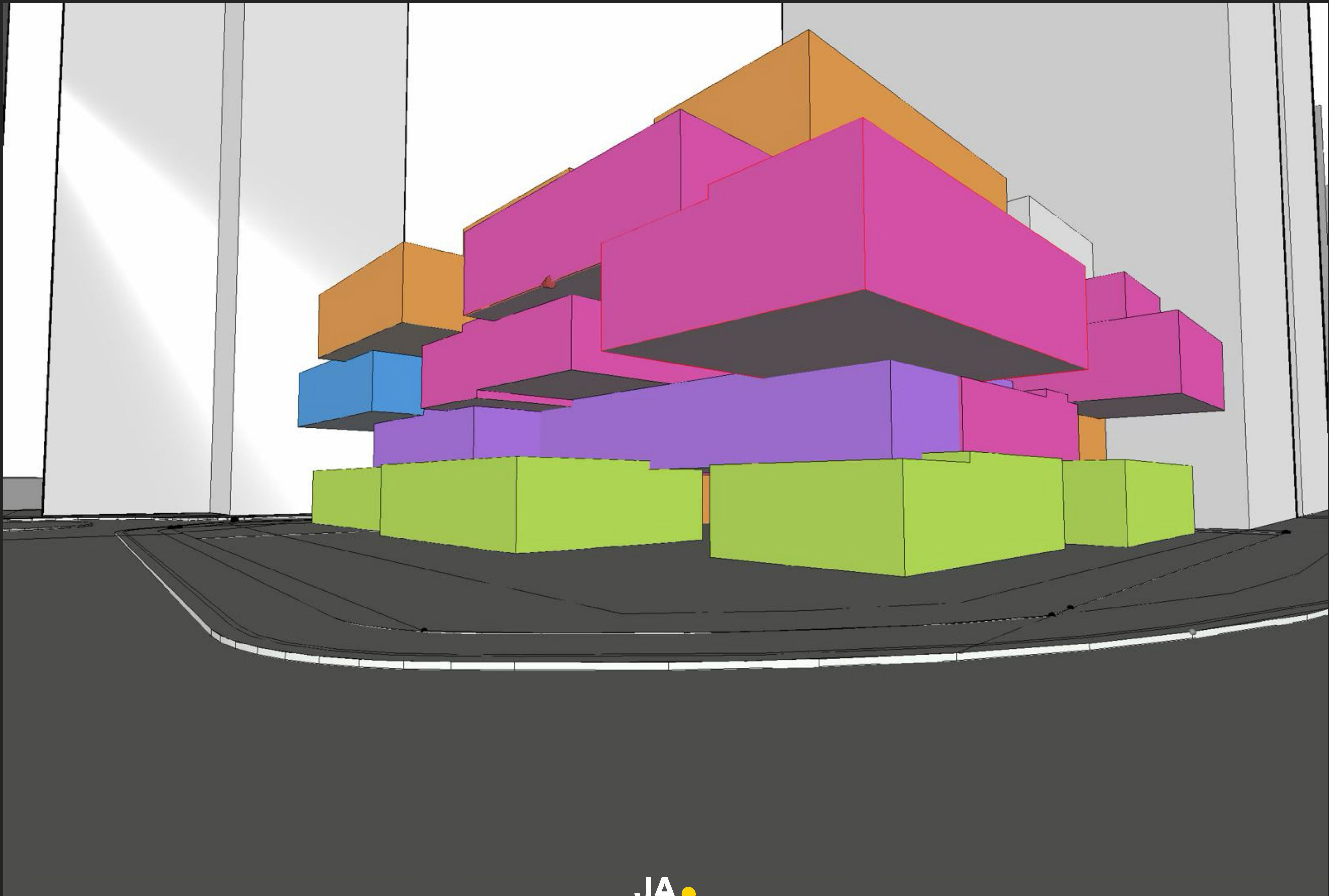
Please Enhance this architectural rendering while maintaining the
EXACT geometry, proportions, and camera perspective.

CRITICAL RULES (NON-NEGOTIABLE)

- Do NOT change the building design in any way
- Do NOT modify massing, façade, or terraces
- Do NOT shift camera position, framing, or focal length
- Do NOT alter surrounding towers
- Only enhance atmosphere, lighting, and street-level vegetation

ATMOSPHERE (PRIMARY FOCUS)

- Intensify the humid tropical atmosphere (PaRAGUAY-like)
- Add fine mist / light rain haze in the air
- Increase depth through atmospheric perspective (slightly softer background towers)
- Introduce subtle rain streaks (very fine, not dramatic)





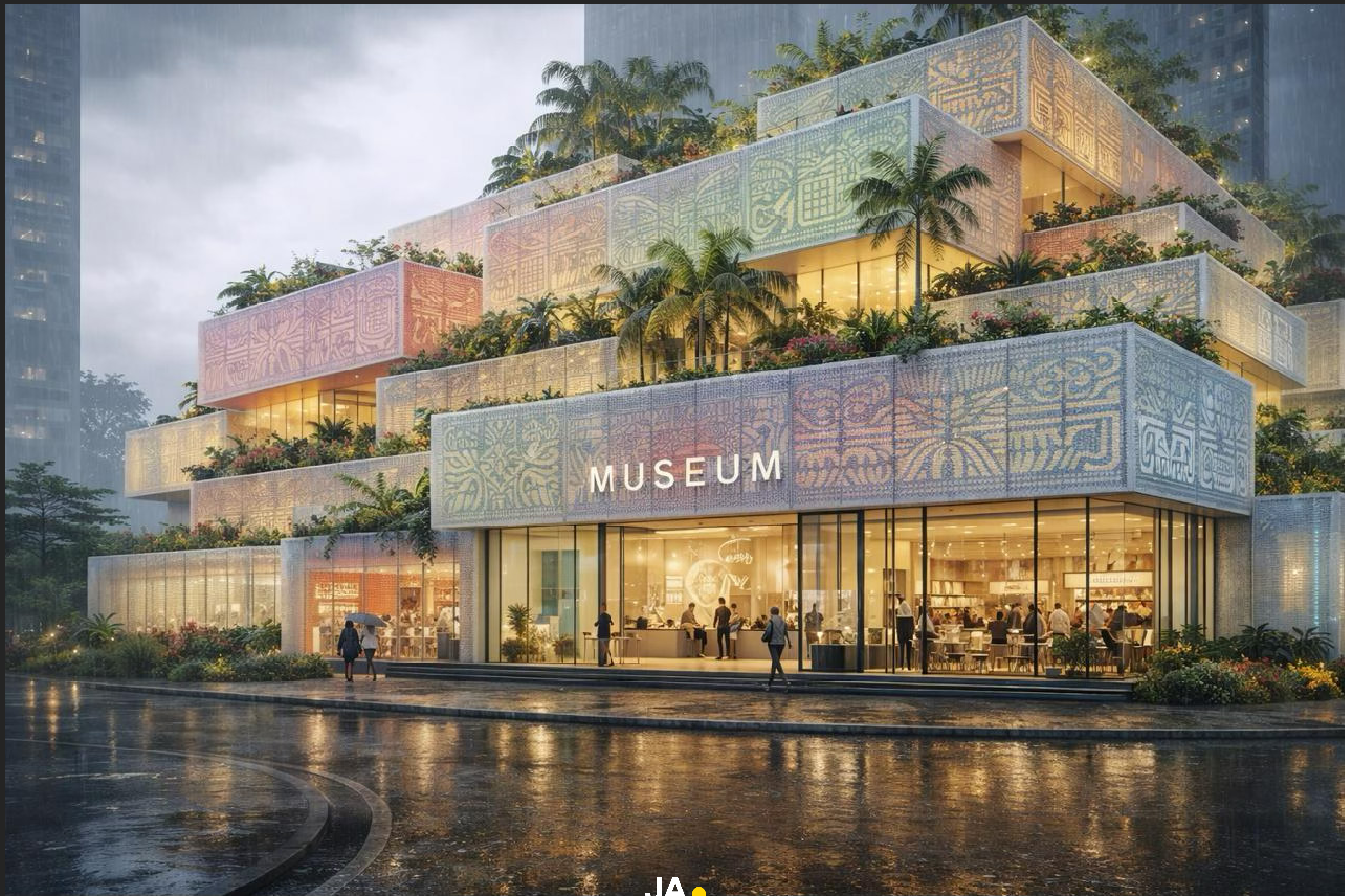








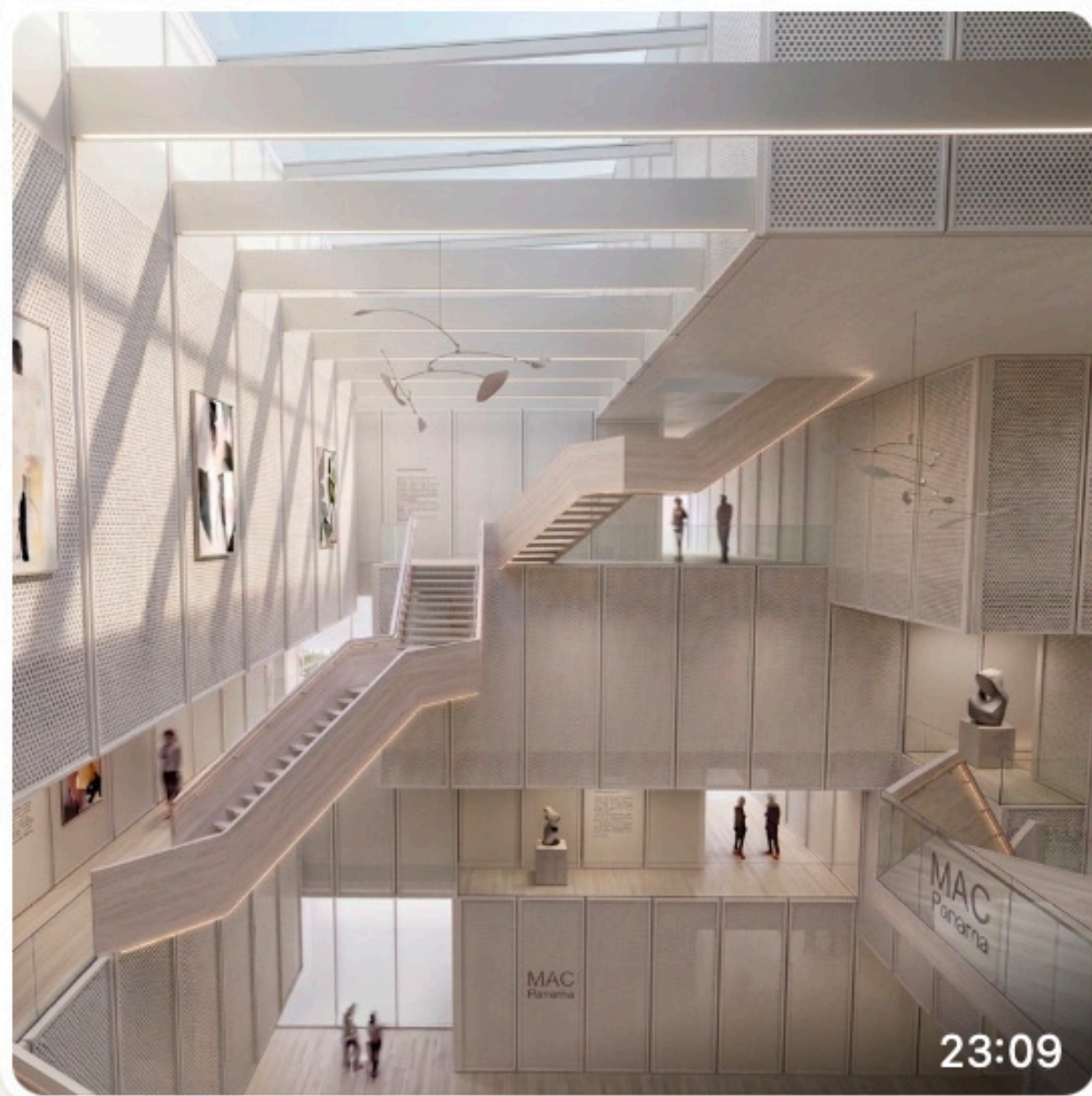
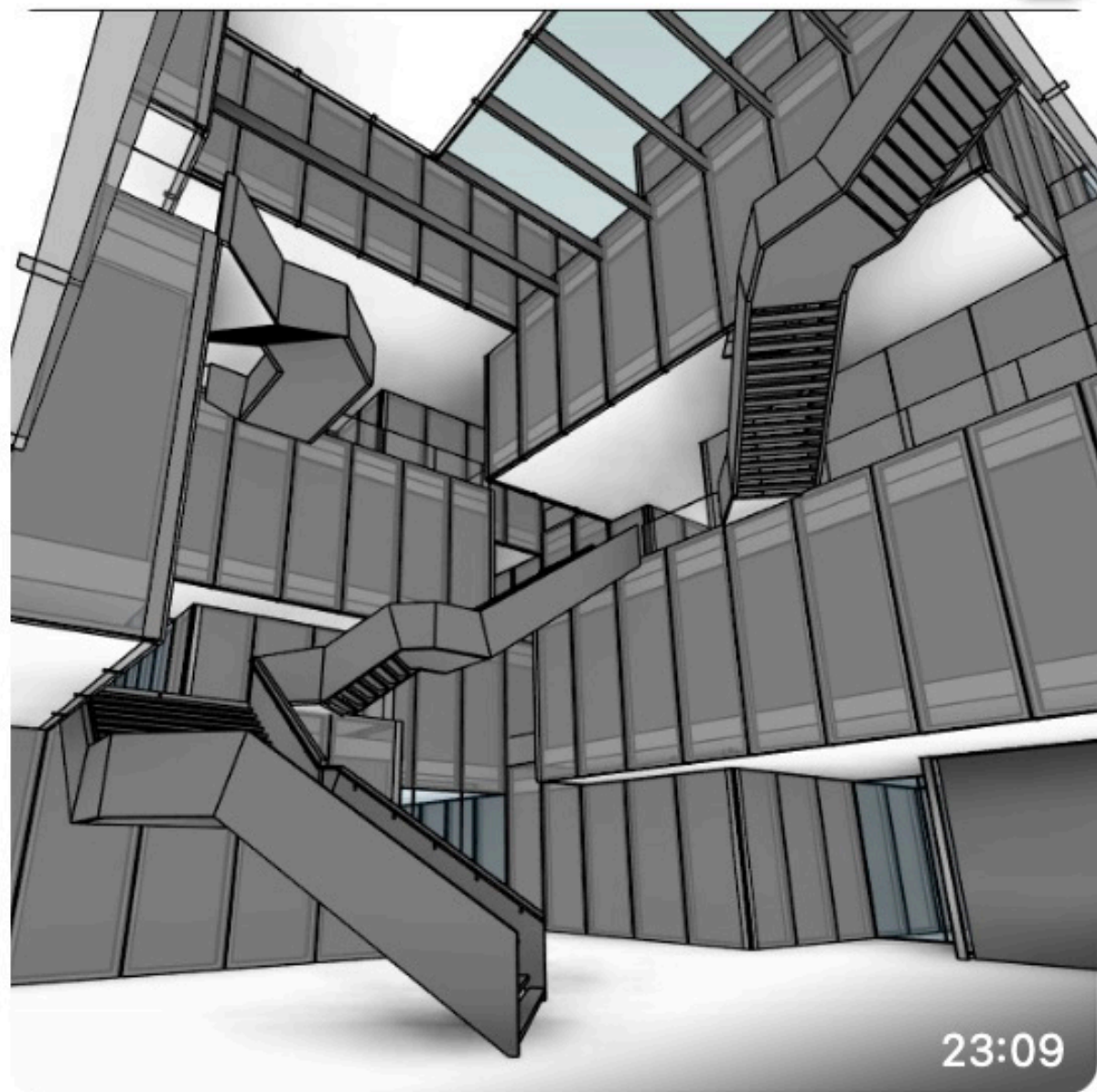
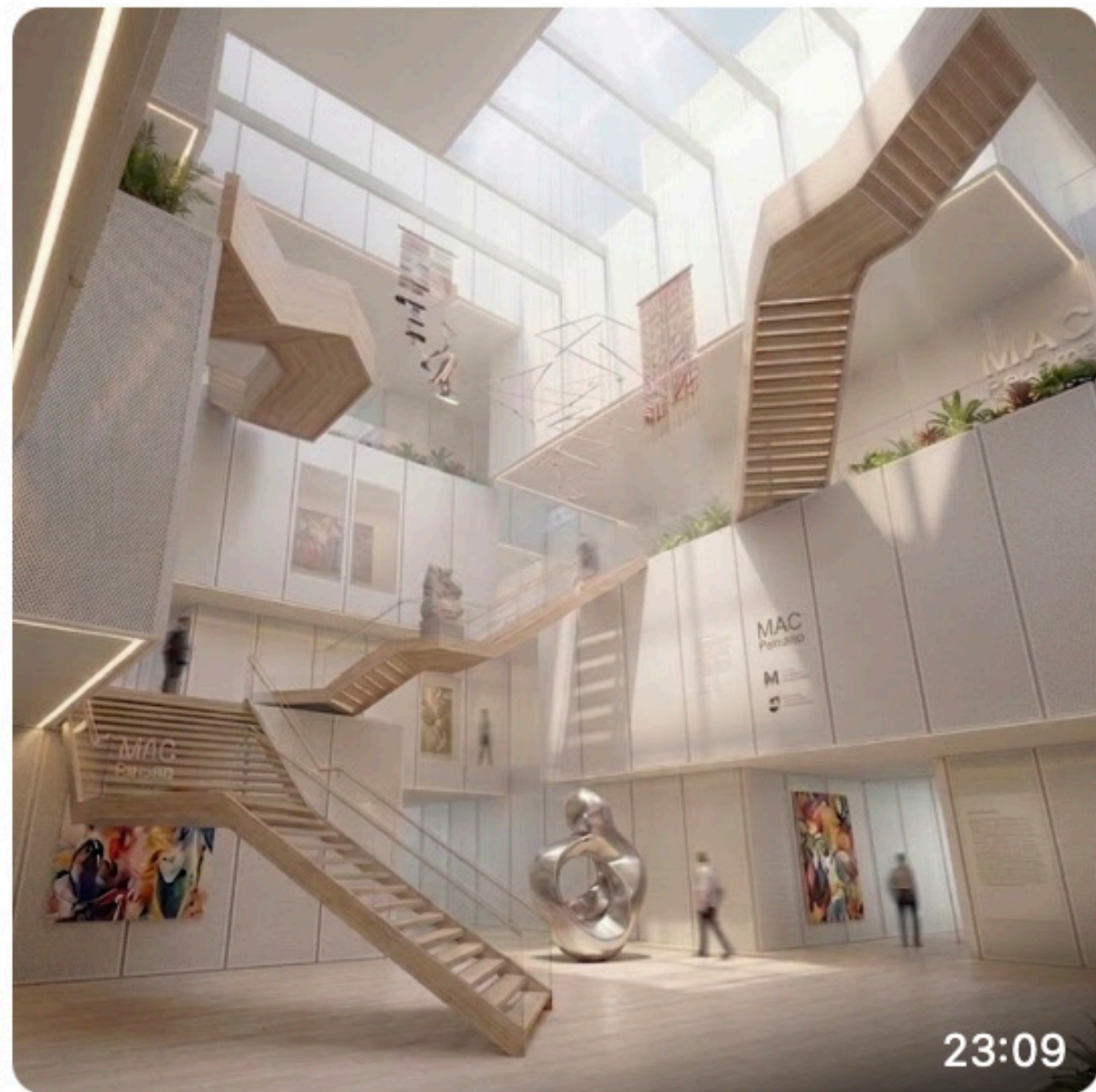






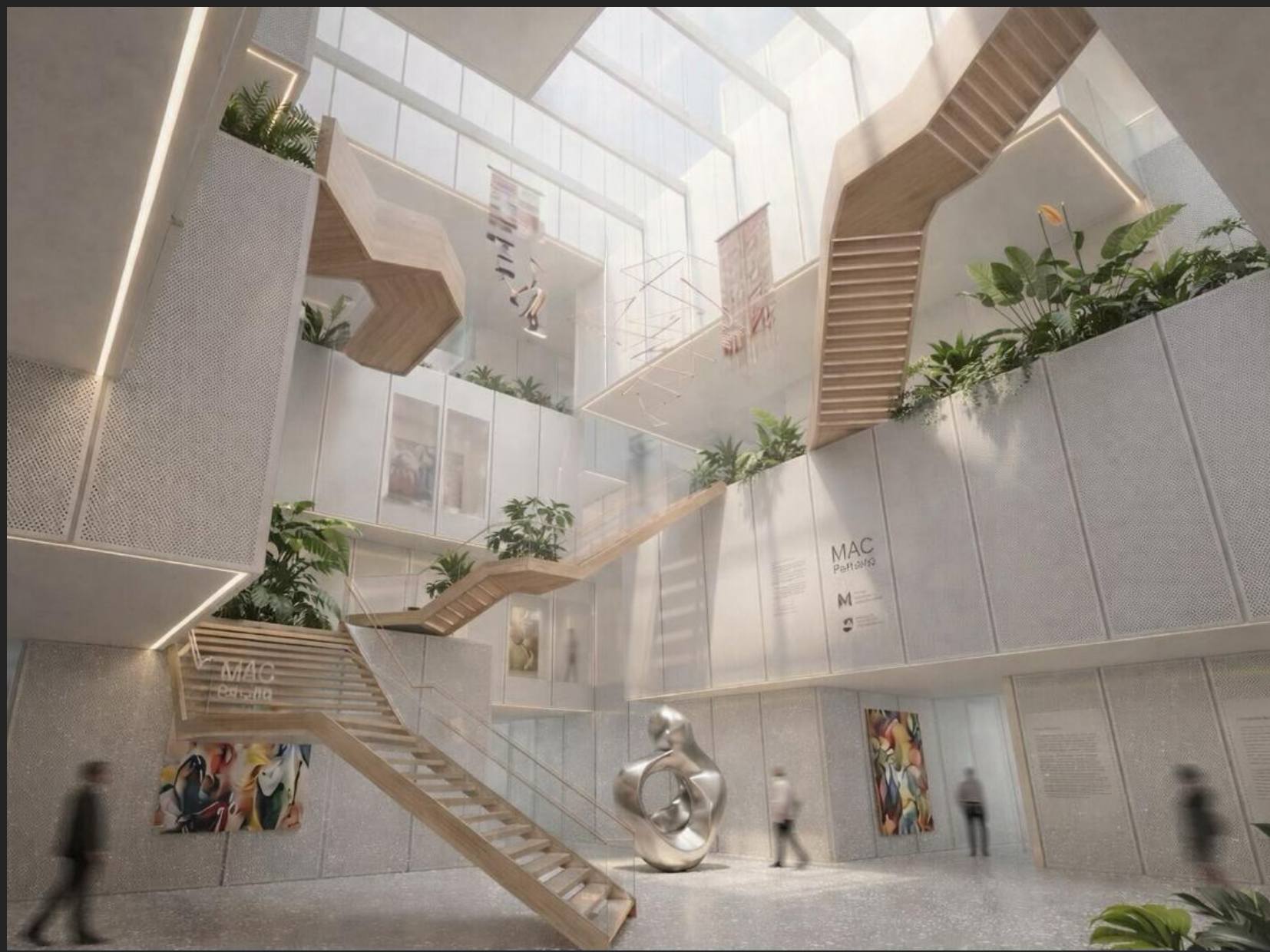
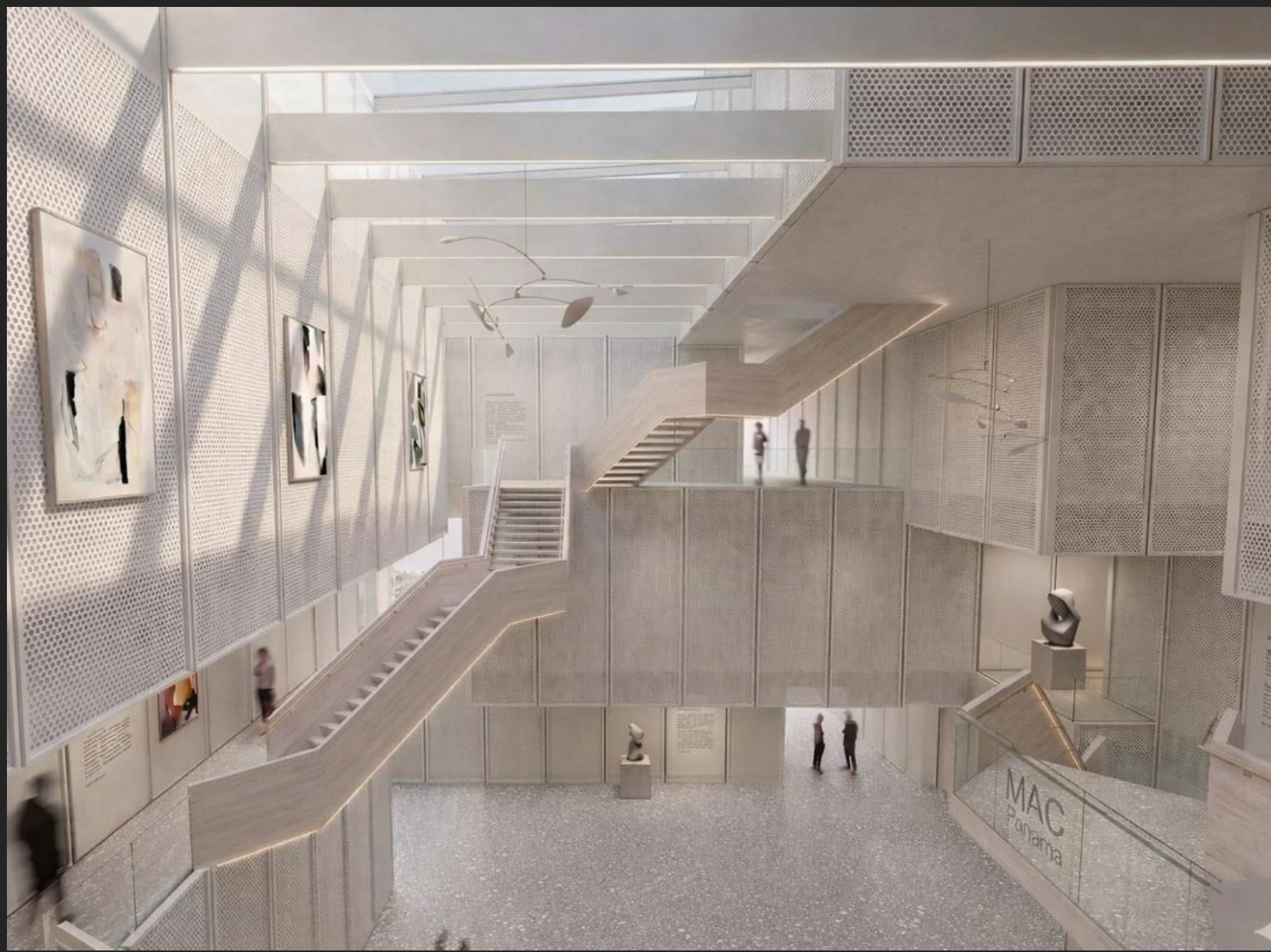






estas son las pruebas preliminares para el render interior Edited 23:09







INTERFACE
MUSEUM OF ARTS SOCIETY







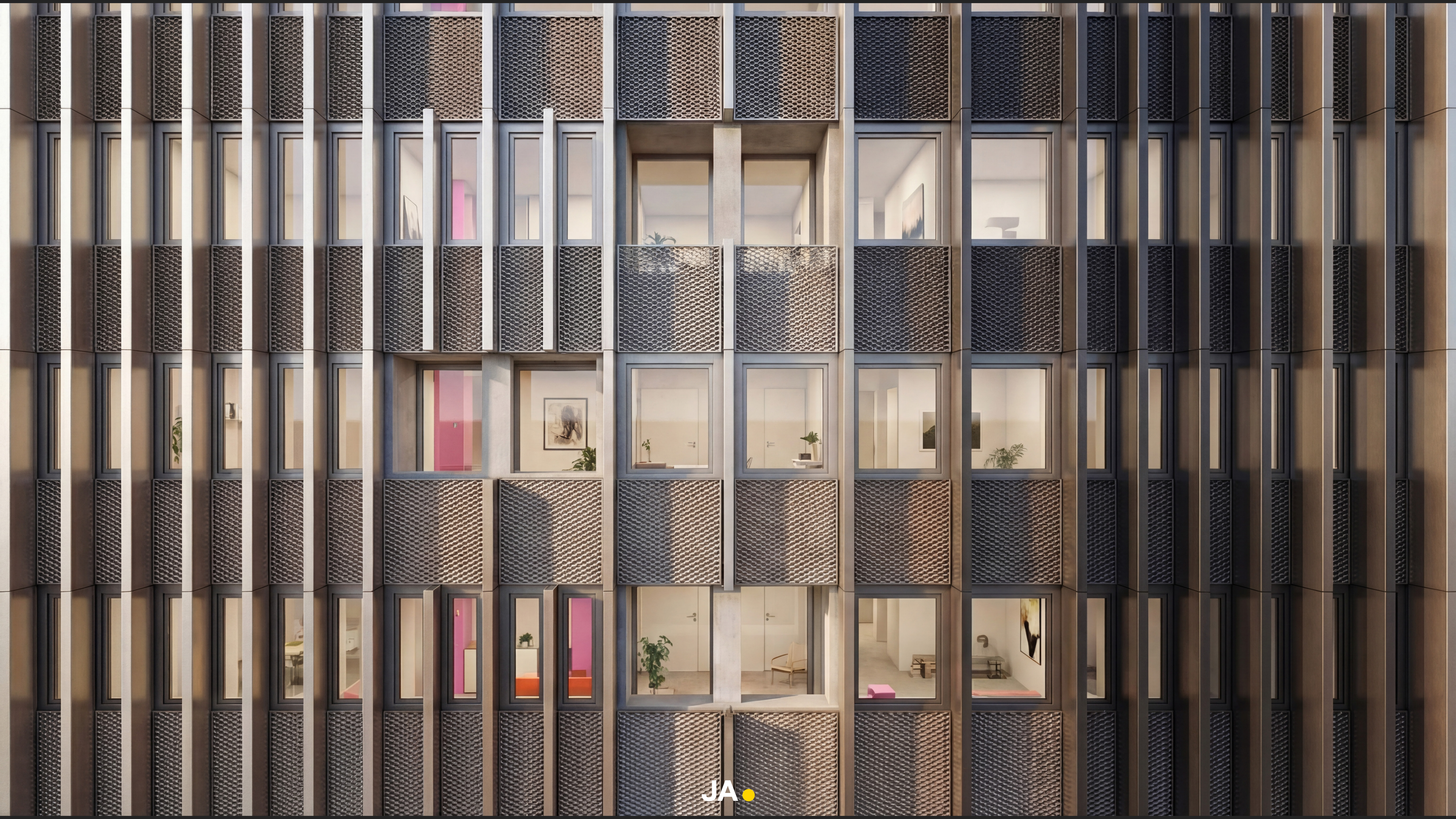




JA







CASA ISLA PROYECTO



24.02.2026







IMAGEN EXTERIOR
ACCESO



IMAGEN EXTERIOR
PILETA + SOLARIUM

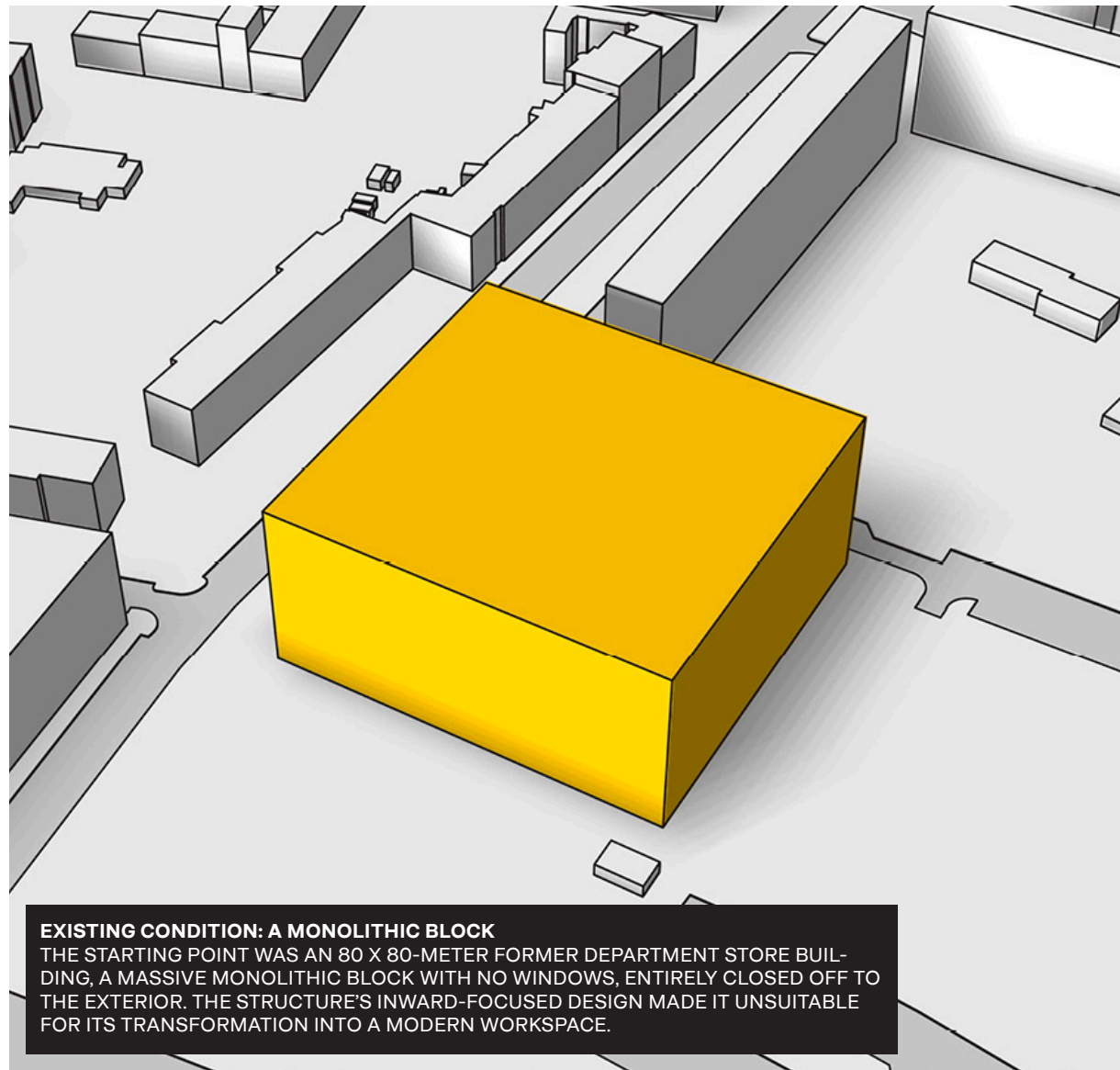




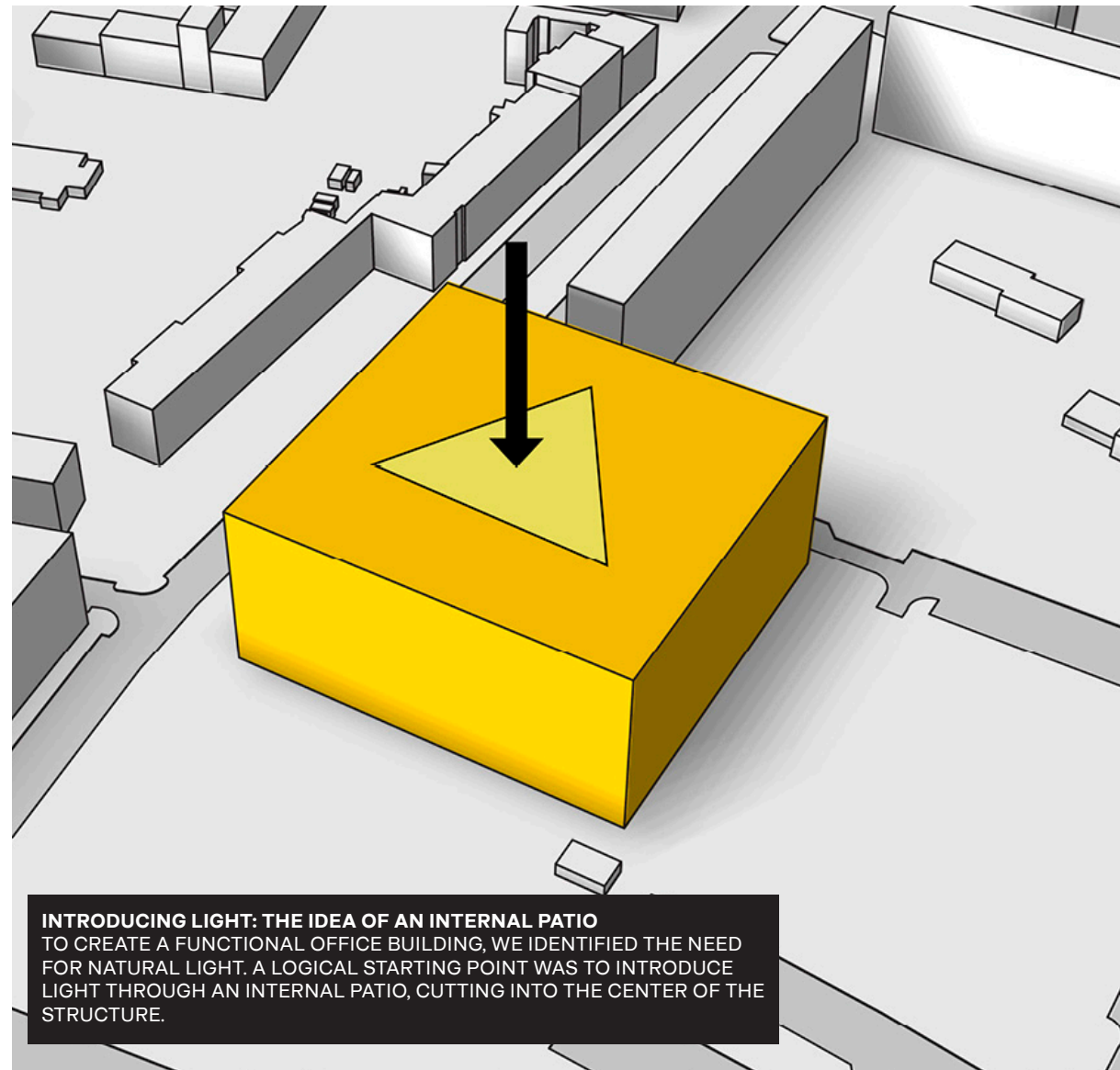
AI: FASTER THINKING, **NOT** BETTER ANSWERS



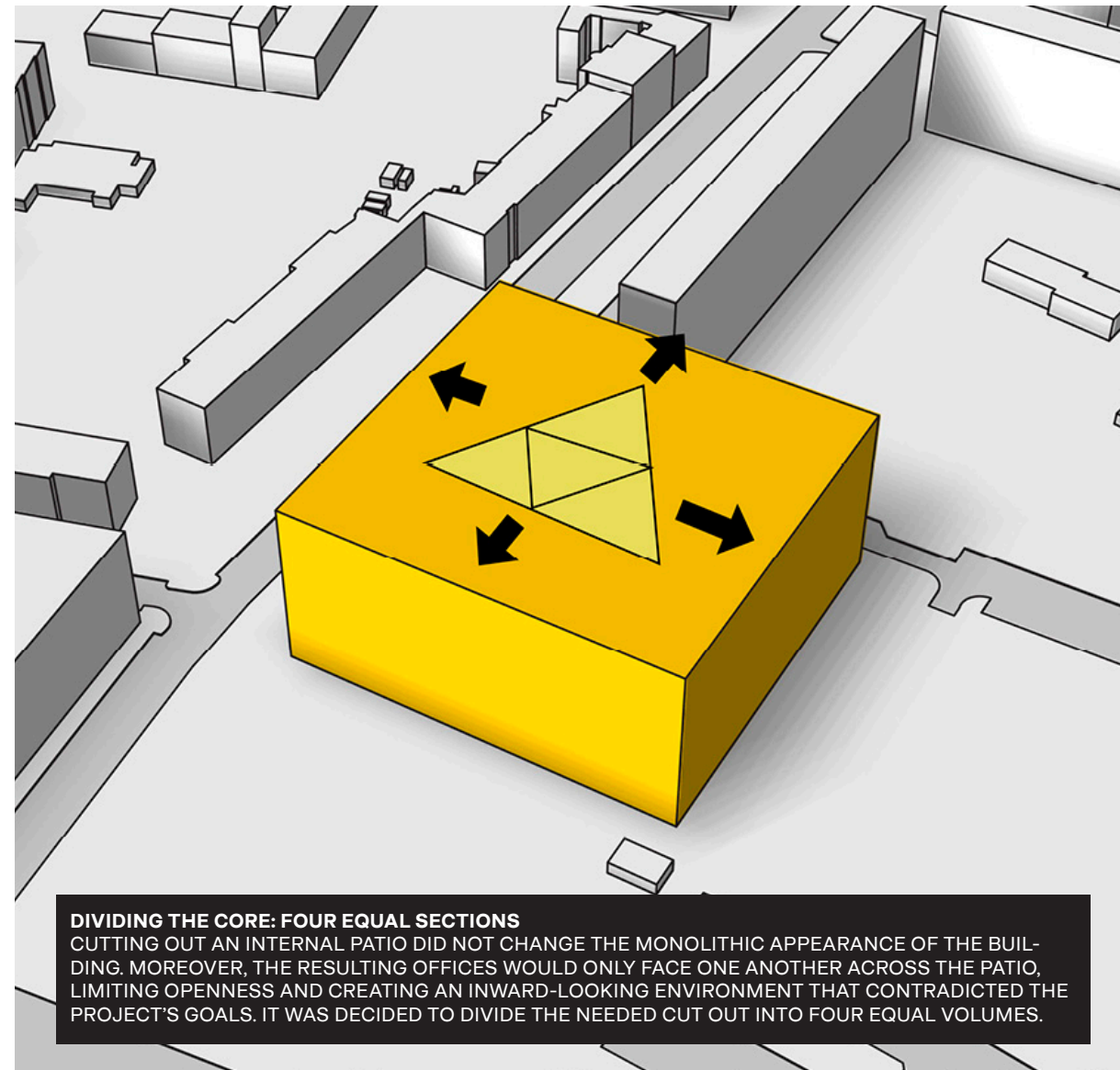
CONCEPTUAL DEVELOPMENT



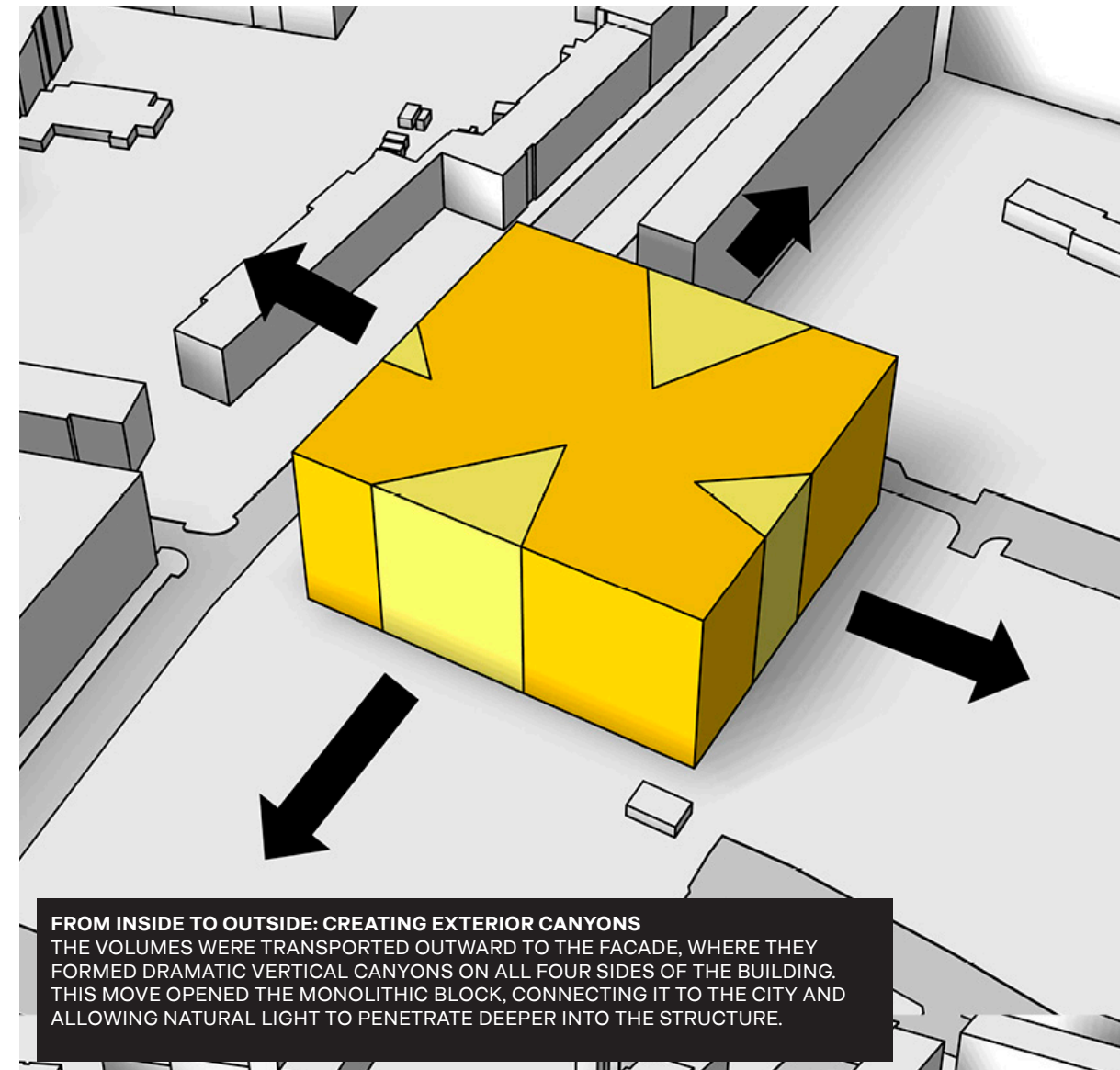
EXISTING CONDITION: A MONOLITHIC BLOCK
 THE STARTING POINT WAS AN 80 X 80-METER FORMER DEPARTMENT STORE BUILDING, A MASSIVE MONOLITHIC BLOCK WITH NO WINDOWS, ENTIRELY CLOSED OFF TO THE EXTERIOR. THE STRUCTURE'S INWARD-FOCUSED DESIGN MADE IT UNSUITABLE FOR ITS TRANSFORMATION INTO A MODERN WORKSPACE.



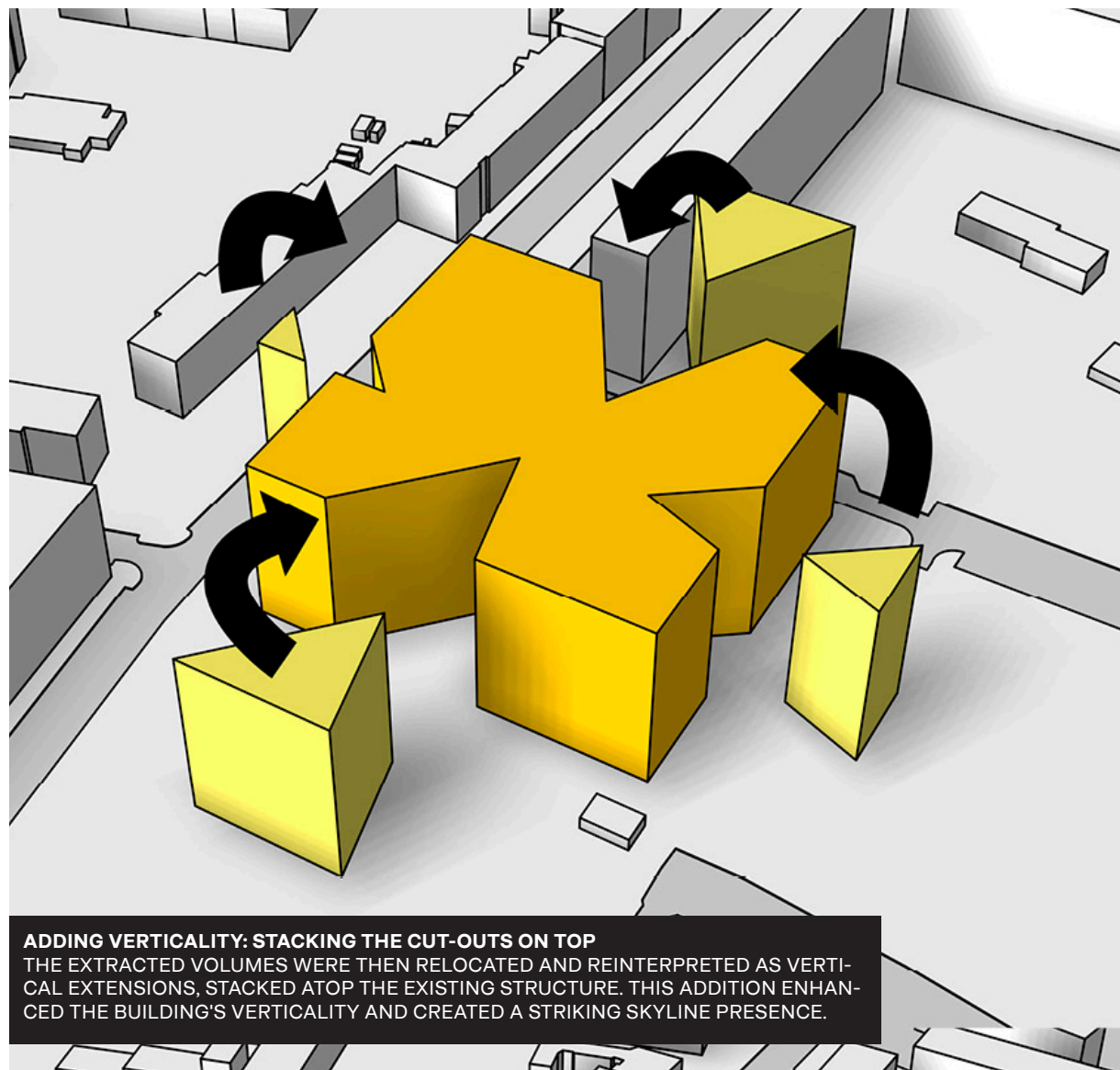
INTRODUCING LIGHT: THE IDEA OF AN INTERNAL PATIO
 TO CREATE A FUNCTIONAL OFFICE BUILDING, WE IDENTIFIED THE NEED FOR NATURAL LIGHT. A LOGICAL STARTING POINT WAS TO INTRODUCE LIGHT THROUGH AN INTERNAL PATIO, CUTTING INTO THE CENTER OF THE STRUCTURE.



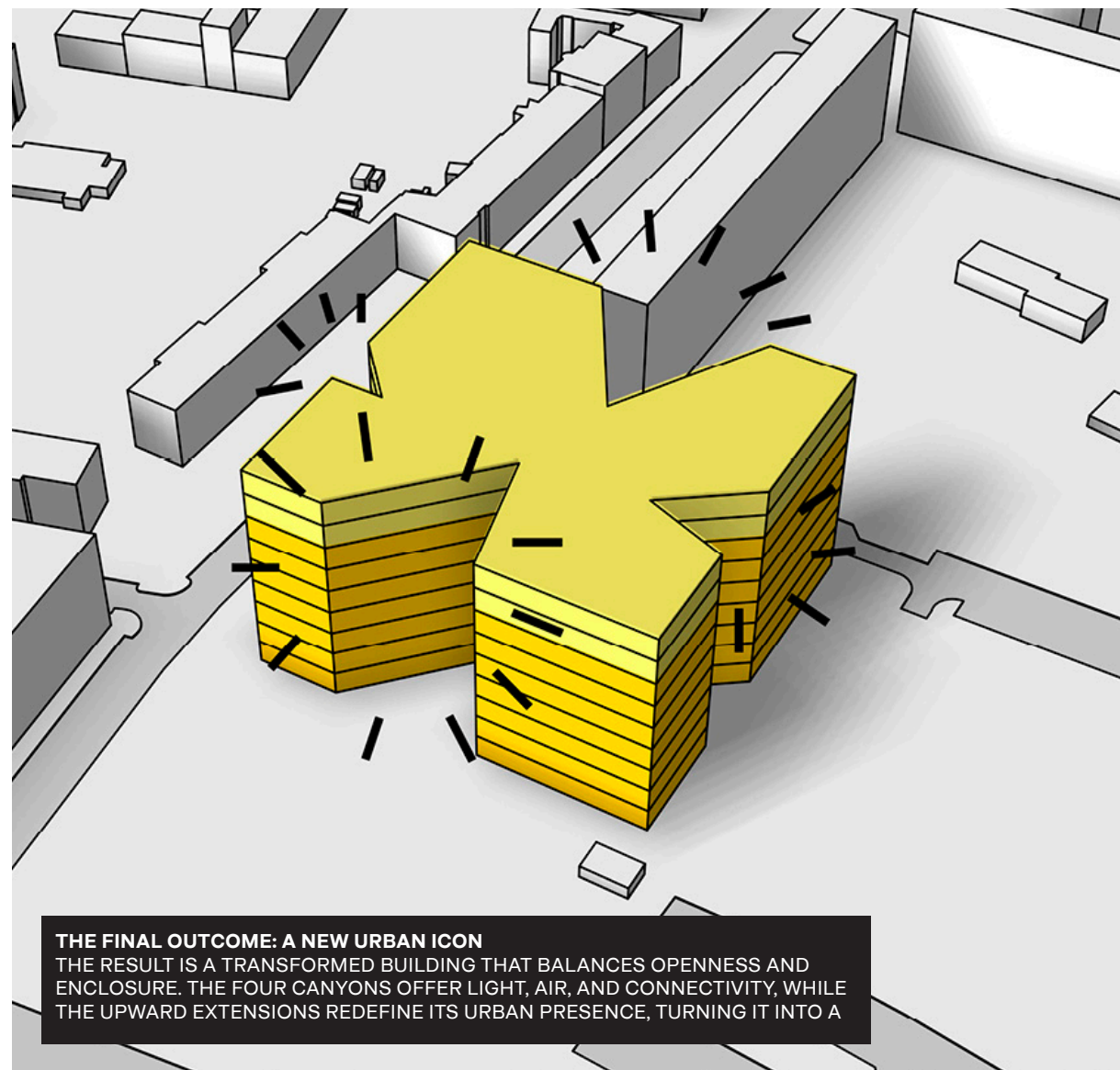
DIVIDING THE CORE: FOUR EQUAL SECTIONS
 CUTTING OUT AN INTERNAL PATIO DID NOT CHANGE THE MONOLITHIC APPEARANCE OF THE BUILDING. MOREOVER, THE RESULTING OFFICES WOULD ONLY FACE ONE ANOTHER ACROSS THE PATIO, LIMITING OPENNESS AND CREATING AN INWARD-LOOKING ENVIRONMENT THAT CONTRADICTED THE PROJECT'S GOALS. IT WAS DECIDED TO DIVIDE THE NEEDED CUT OUT INTO FOUR EQUAL VOLUMES.



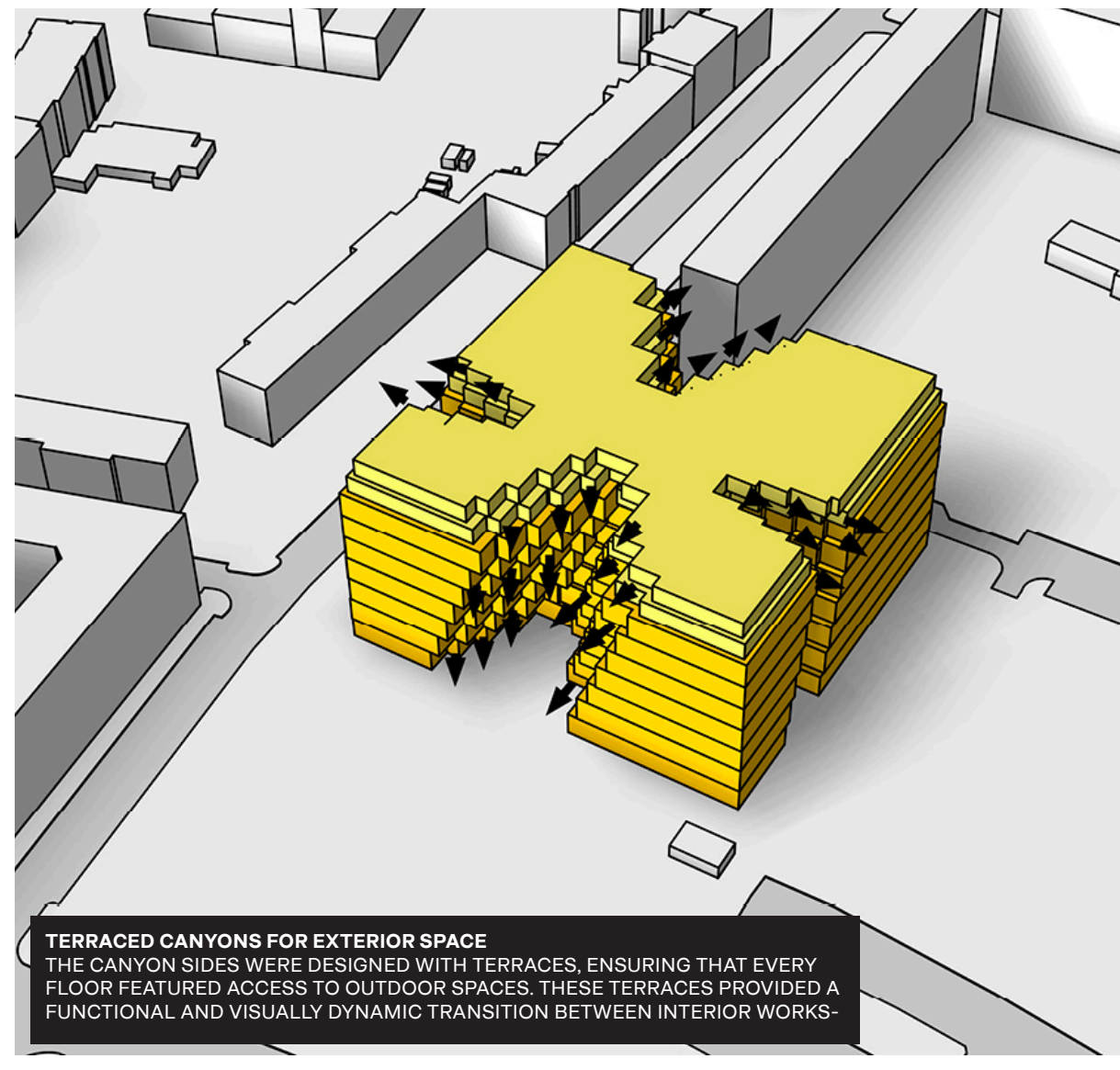
FROM INSIDE TO OUTSIDE: CREATING EXTERIOR CANYONS
 THE VOLUMES WERE TRANSPORTED OUTWARD TO THE FACADE, WHERE THEY FORMED DRAMATIC VERTICAL CANYONS ON ALL FOUR SIDES OF THE BUILDING. THIS MOVE OPENED THE MONOLITHIC BLOCK, CONNECTING IT TO THE CITY AND ALLOWING NATURAL LIGHT TO PENETRATE DEEPER INTO THE STRUCTURE.



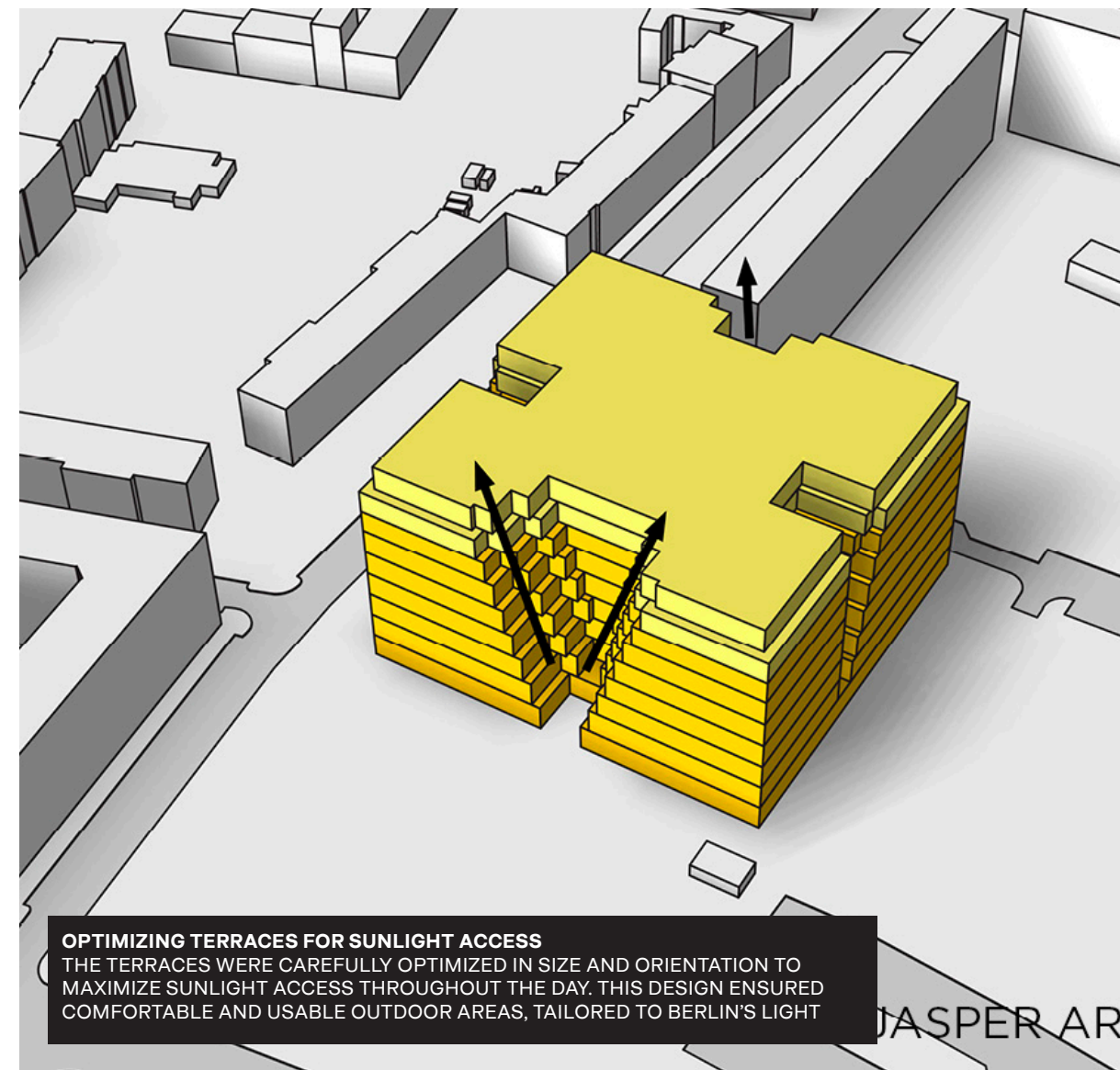
ADDING VERTICALITY: STACKING THE CUT-OUTS ON TOP
 THE EXTRACTED VOLUMES WERE THEN RELOCATED AND REINTERPRETED AS VERTICAL EXTENSIONS, STACKED ATOP THE EXISTING STRUCTURE. THIS ADDITION ENHANCED THE BUILDING'S VERTICALITY AND CREATED A STRIKING SKYLINE PRESENCE.



THE FINAL OUTCOME: A NEW URBAN ICON
 THE RESULT IS A TRANSFORMED BUILDING THAT BALANCES OPENNESS AND ENCLOSURE. THE FOUR CANYONS OFFER LIGHT, AIR, AND CONNECTIVITY, WHILE THE UPWARD EXTENSIONS REDEFINE ITS URBAN PRESENCE, TURNING IT INTO A



TERRACED CANYONS FOR EXTERIOR SPACE
 THE CANYON SIDES WERE DESIGNED WITH TERRACES, ENSURING THAT EVERY FLOOR FEATURED ACCESS TO OUTDOOR SPACES. THESE TERRACES PROVIDED A FUNCTIONAL AND VISUALLY DYNAMIC TRANSITION BETWEEN INTERIOR WORK-



OPTIMIZING TERRACES FOR SUNLIGHT ACCESS
 THE TERRACES WERE CAREFULLY OPTIMIZED IN SIZE AND ORIENTATION TO MAXIMIZE SUNLIGHT ACCESS THROUGHOUT THE DAY. THIS DESIGN ENSURED COMFORTABLE AND USABLE OUTDOOR AREAS, TAILORED TO BERLIN'S LIGHT

JASPER ARCO



INTENT.